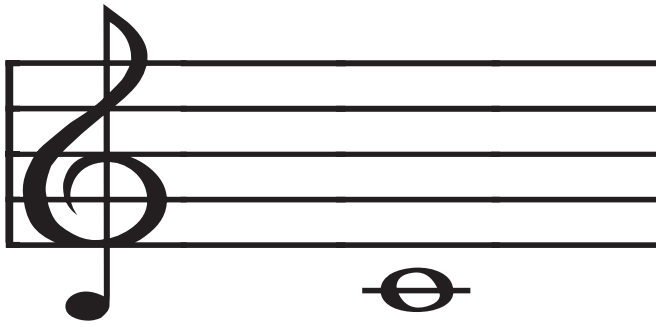


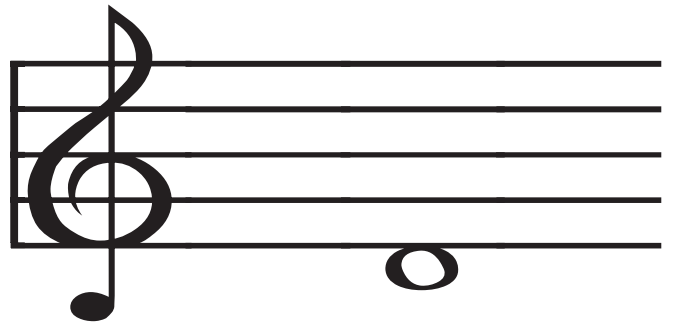
Treblemakers • bigtreble.com

Flash Cards



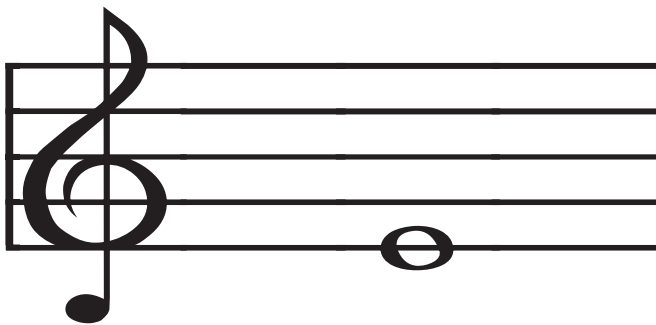
Treblemakers • bigtreble.com

Flash Cards



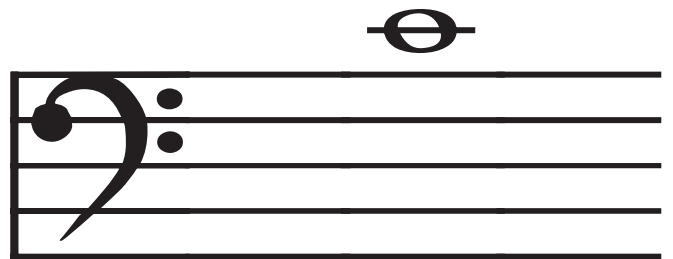
Treblemakers • bigtreble.com

Flash Cards



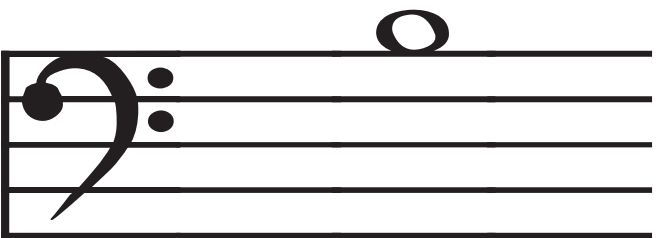
Treblemakers • bigtreble.com

Flash Cards



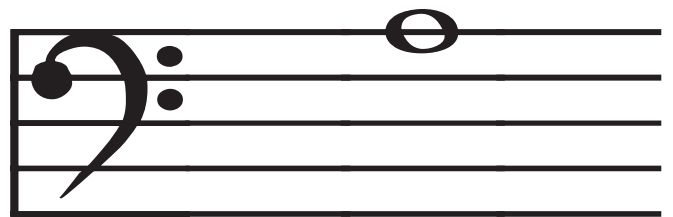
Treblemakers • bigtreble.com

Flash Cards



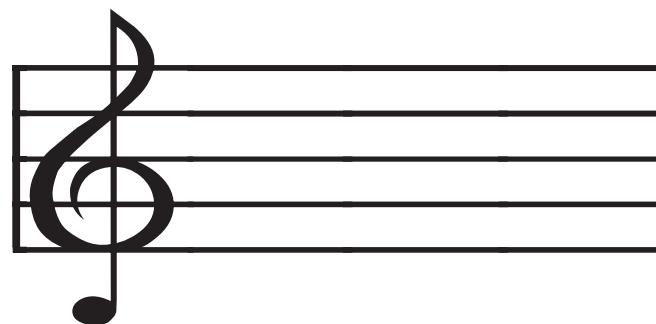
Treblemakers • bigtreble.com

Flash Cards



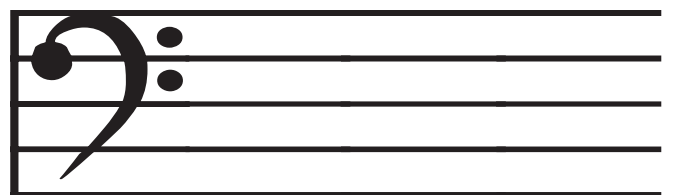
Treblemakers • bigtreble.com

Flash Cards



Treblemakers • bigtreble.com

Flash Cards



**D**

**Middle C**

**Middle C**

**E**

**A**

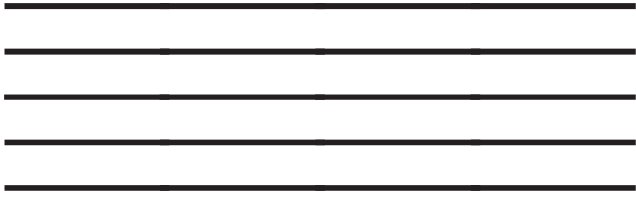
**B**

**Bass Clef or F Clef**  
lower part of piano  
called F Clef because the two dots  
surround the F line

**Treble Clef or G Clef**  
higher part of piano  
called G Clef because it curls into the  
G line

Treblemakers • bigtreble.com

Flash Cards



Treblemakers • bigtreble.com

Flash Cards



Treblemakers • bigtreble.com

Flash Cards



Treblemakers • bigtreble.com

Flash Cards



Treblemakers • bigtreble.com

Flash Cards



Treblemakers • bigtreble.com

Flash Cards



Treblemakers • bigtreble.com

Flash Cards



Treblemakers • bigtreble.com

Flash Cards



**Whole Note**  
**4 counts**

**Staff**

**Half Note**  
**2 counts**

**Quarter Note**  
**1 count**

**Dotted Half Note**  
**3 counts**

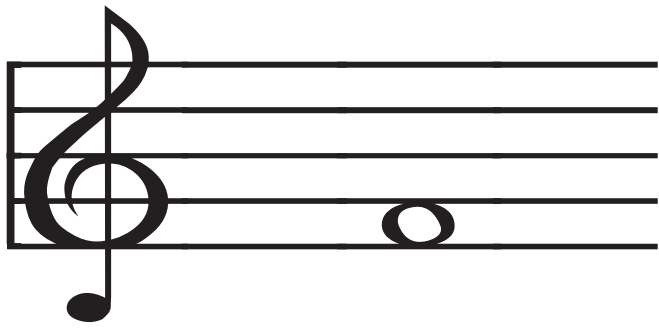
**Eighth Note**  
**1/2 a count**

**Dotted Quarter Note**  
**1 1/2 counts**

**Quarter Rest**  
**1 count of silence**

Treblemakers • bigtreble.com

Flash Cards



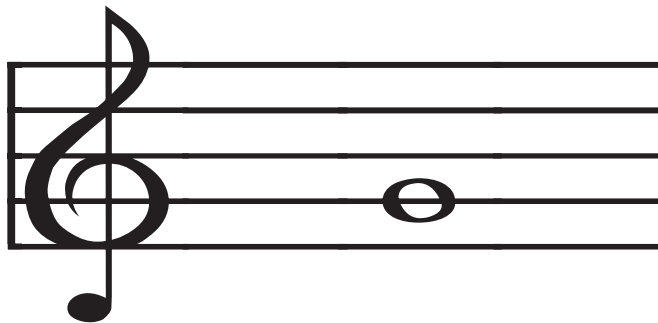
Treblemakers • bigtreble.com

Flash Cards



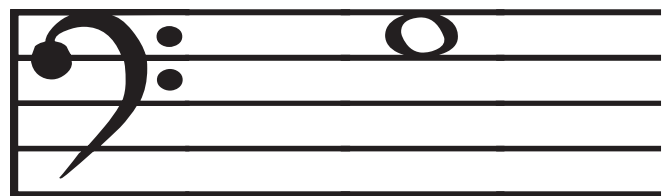
Treblemakers • bigtreble.com

Flash Cards



Treblemakers • bigtreble.com

Flash Cards



Treblemakers • bigtreble.com

Flash Cards



Treblemakers • bigtreble.com

Flash Cards



Treblemakers • bigtreble.com

Flash Cards



Treblemakers • bigtreble.com

Flash Cards



**F**

**F**

**G**

**G**

**Sixteenth Note**  
**1/4 counts**

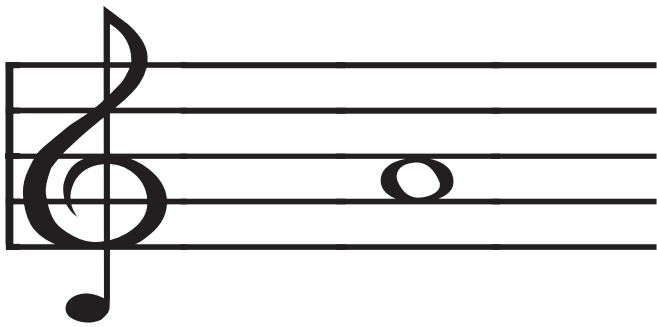
**Eighth Rest**  
**1/2 a count**

**Half Rest**  
**2 counts of silence**

**Whole Rest**  
**4 counts of silence**

Treblemakers • bigtreble.com

Flash Cards



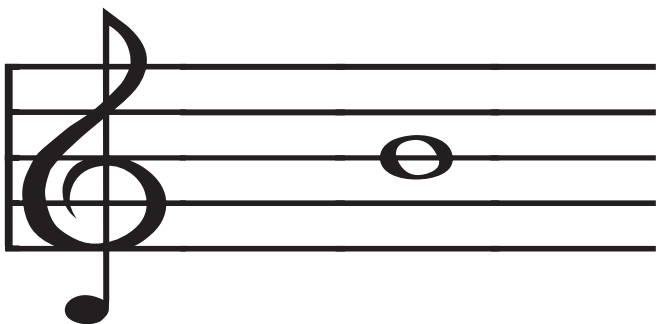
Treblemakers • bigtreble.com

Flash Cards



Treblemakers • bigtreble.com

Flash Cards



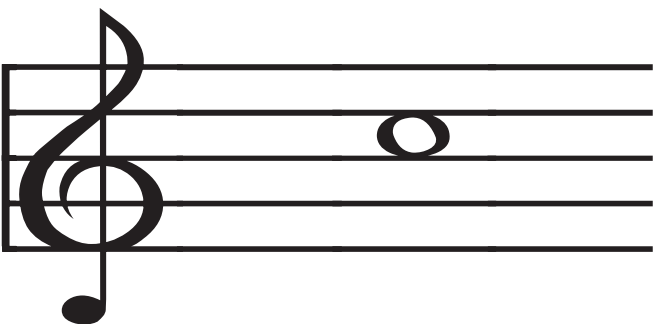
Treblemakers • bigtreble.com

Flash Cards



Treblemakers • bigtreble.com

Flash Cards



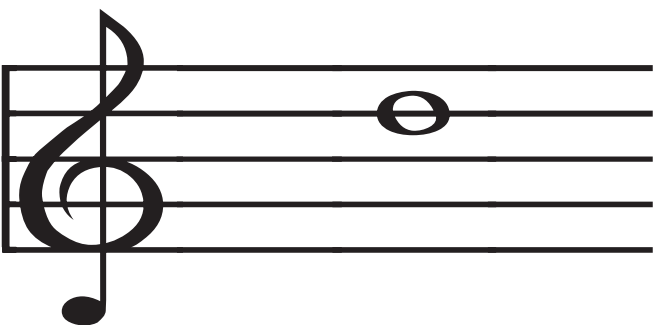
Treblemakers • bigtreble.com

Flash Cards



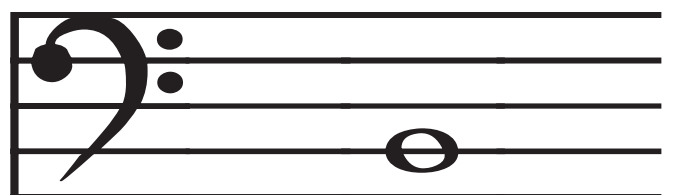
Treblemakers • bigtreble.com

Flash Cards



Treblemakers • bigtreble.com

Flash Cards



**E**

**A**

**D**

**B**

**medium-low C**

**medium-high C**

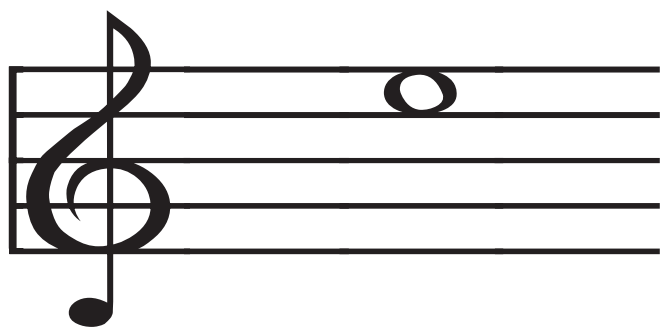
**B**

**D**



Treblemakers • bigtreble.com

Flash Cards



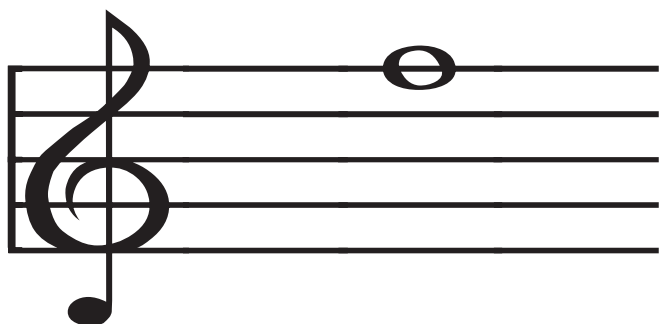
Treblemakers • bigtreble.com

Flash Cards



Treblemakers • bigtreble.com

Flash Cards



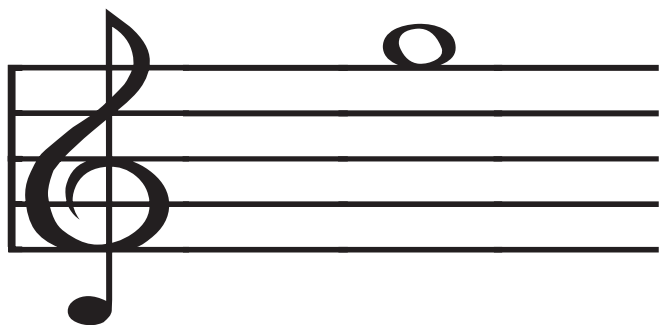
Treblemakers • bigtreble.com

Flash Cards



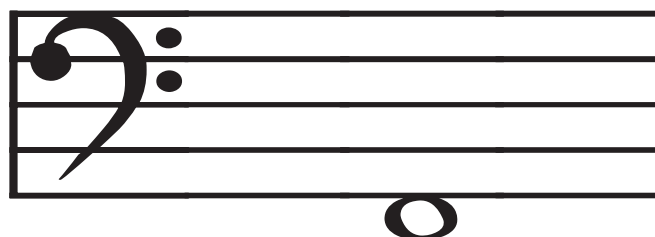
Treblemakers • bigtreble.com

Flash Cards



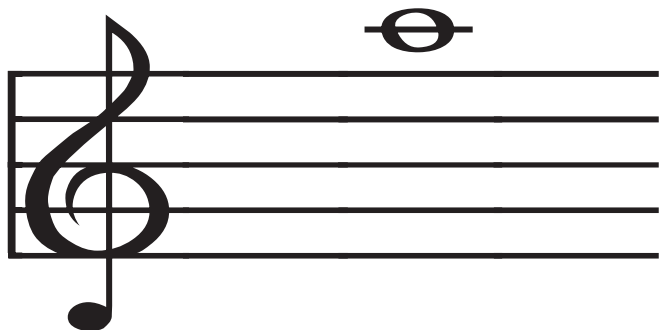
Treblemakers • bigtreble.com

Flash Cards



Treblemakers • bigtreble.com

Flash Cards



Treblemakers • bigtreble.com

Flash Cards



**A**

**E**

**G**

**F**

**F**

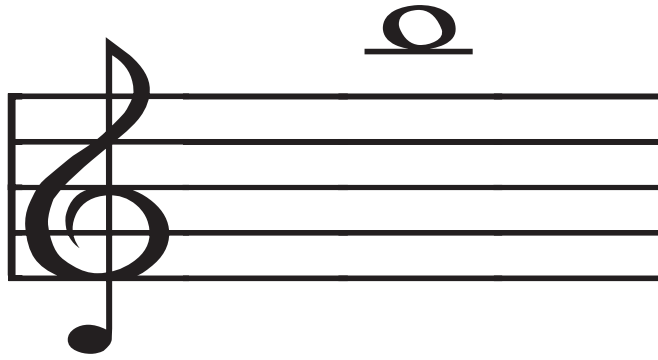
**G**

**E**

**A**

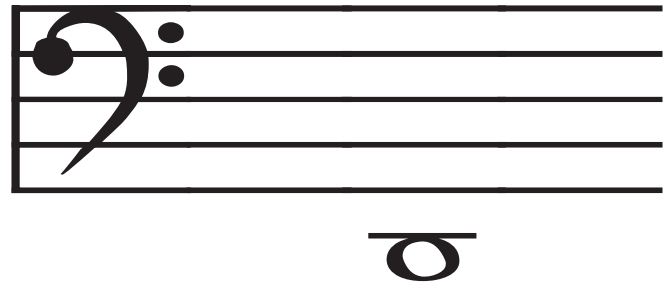
Treblemakers • bigtreble.com

Flash Cards



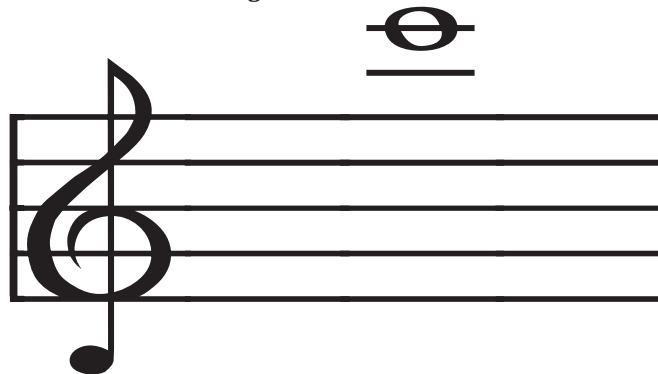
Treblemakers • bigtreble.com

Flash Cards



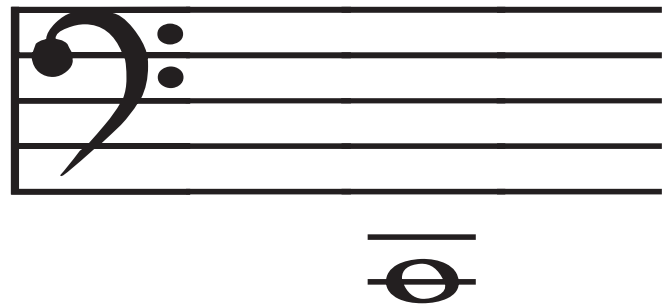
Treblemakers • bigtreble.com

Flash Cards



Treblemakers • bigtreble.com

Flash Cards



Treblemakers • bigtreble.com

Flash Cards



Treblemakers • bigtreble.com

Flash Cards



Treblemakers • bigtreble.com

Flash Cards



Treblemakers • bigtreble.com

Flash Cards



**B**

**D**

**Low C**

**High C**

**Sharp**

raises note by  $1/2$  step

**Flat**

lowers note by  $1/2$  step

**Sixteenth Rest**

$1/4$  count of silence

**Natural**

takes away sharp or flat