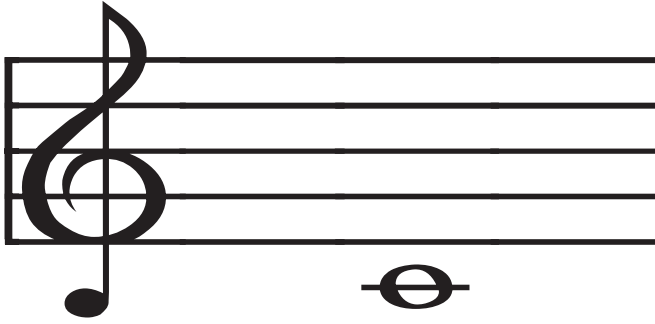


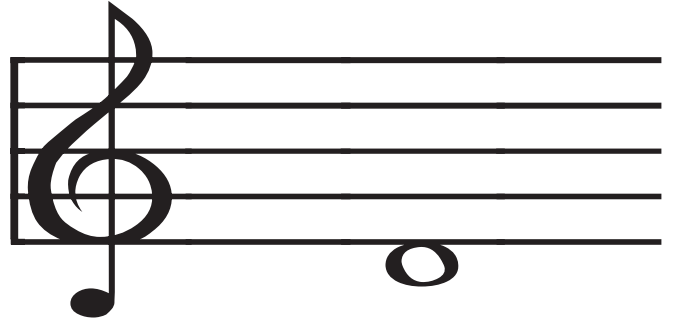
Treblemakers • bigtreble.com

Flash Cards



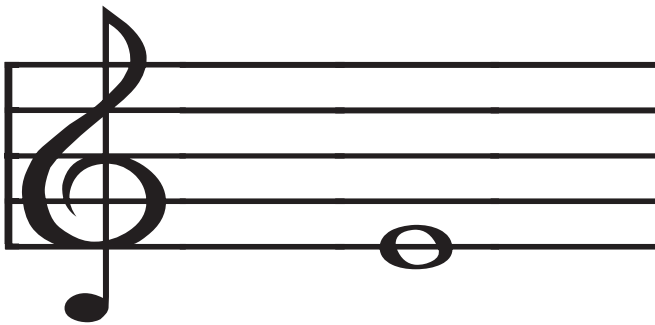
Treblemakers • bigtreble.com

Flash Cards



Treblemakers • bigtreble.com

Flash Cards



Treblemakers • bigtreble.com

Flash Cards



Treblemakers • bigtreble.com

Flash Cards



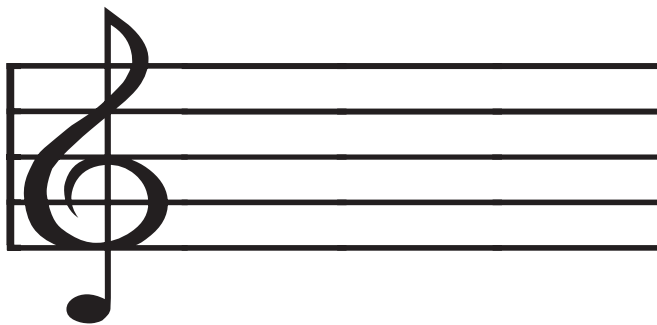
Treblemakers • bigtreble.com

Flash Cards



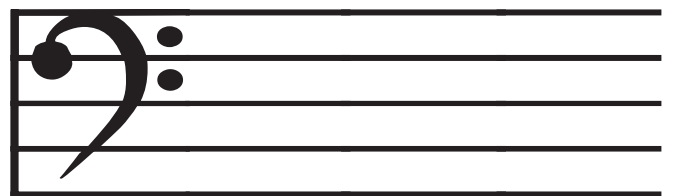
Treblemakers • bigtreble.com

Flash Cards



Treblemakers • bigtreble.com

Flash Cards



**D**

**Middle C**

**Whole Note  
4 counts**

**E**

**Half Note  
2 counts**

**Quarter Note  
1 count**

**Bass Clef or F Clef**  
lower part of piano  
called F Clef because the two dots  
surround the F line

**Treble Clef or G Clef**  
higher part of piano  
called G Clef because it curls into the  
G line